
Saturn 8000 14x17 Wired

Portable Flat Panel Detector
For Digital Radiography



Saturn 8000 14x17 Wired is a NMI's flat panel digital radiography cassette system with 14" x 17" coverage area for general radiographic applications using its unique image processing system and proprietary flat panel detector. With the same size as a film or a CR cassette, it is an excellent solution for upgrading conventional X-ray system. User friendly imaging software, DxWorks is compliant with DICOM 3.0 standard and provides consistent image quality at a dramatically reduced dose and faster image information with optimized algorithm for each different study. It only takes a few simple steps to acquire and transmit images to the DICOM server through Gigabit Ethernet.

SATURN 8000

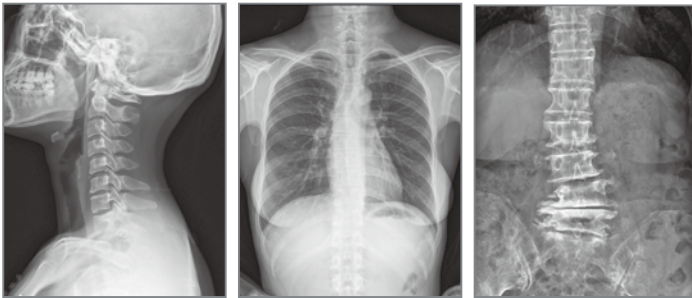
Features

- * Wide active area of 14" x 17"
- * High spatial resolution with 140um pixel array
- * Stable and reliable automatic exposure detection
- * Viewer software running on Windows™ OS (DxWorks)
- * Communication interface through Gigabit Ethernet (1000 BASE-T)
- * Simple and easy integration with all kinds of digital radiography system

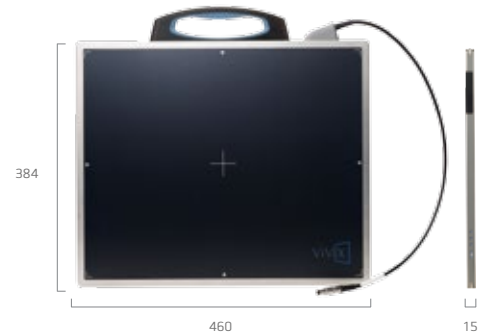


Configuration
 Detector
 System Control Unit

Acquired Images



Drawing



Technical Specification

Application	General radiography
Technology	Flat panel detector : a-Si TFT with PIN diode
Scintillator	CsI:Tl / Gd ₂ O ₂ S:Tb
Pixel Pitch	140um x 140um
Pixels	2,560 x 3,072 pixels
Image Size	14 x 17 inches (35 x 43cm)
A/D Conversion	14 bit
Grayscale	16,384 steps
X-ray Voltage Range	40 ~ 150kVp
X-ray Generator Interface	Line trigger : DR Trigger Mode Auto trigger : AED (Automatic Exposure Detection) Mode
Data Interface	Gigabit Ethernet (1000BASE-T) via PoE (Power over Ethernet)
Extension Cable	GigE communication and power supply (7m)
Dimensions	460 (W) x 384 (L) x 15 (T) mm
Weight	Approx. 2.9kg (GADOX) / 3.1kg (CsI)
Operating Environment	15 ~ 35°C, 30 ~ 85% RH (non-condensing)
Power	DC24V, 0.5A

* Specifications are subject to change without prior notification.



Office

3F., NO.32, Sec. 2, Zhongyang S. Rd., Beitou Dist., Taipei City 11270, Taiwan
 Tel +886-2-2892-2275 Fax +886-2-2892-2172 E-mail Sales@newmedical.com.tw

Factory

41-3, Burim-ro 170beon-gil, Dongan-gu, Anyang-si, Gyeonggi-do, 14055
 Republic of KOREA
www.nmi-dr.com